

OBOE

# A When I Looked Down From the Bridge

ANDY VORES  
(1989)

## The Cruel Mother

♩ = 63c.

*p* *mp-pp*

*sf in pp (e sempre sim.)*

5

10

14

19

23

27

31

2 2 3

# Serenades

♩ = 104c.

9

Strings

*rit.* \_\_\_\_\_ *Tempo*

13

*ffp* *mf*

*Slower*

18

*mf* *f*

*Tempo*

24

*mf* *f*

32

*mp* *f* *f*

36

*p* *f* *p* *f* *pp*

45

*f* *ffp*

50

*mp*

55

*p*

66

*broaden* \_\_\_\_\_ *Tempo*

*p*

73

*f* *p*

# Dream

♩. = 52c. *dark*

10

Violin 1

16 *Faster* ♩. = 72c.

*p* *cresc.*

21

*ff*

25

*pp*

29

*accel.* ♩. = 160c.

33

6

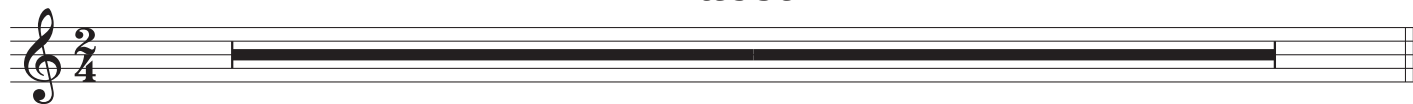
# Servant Boy

♩ = 84c.

Musical score for Oboe, titled "Servant Boy". The score is in 2/4 time and consists of 44 measures. The key signature has one sharp (F#). The tempo is marked as ♩ = 84c. The score is divided into systems of five lines each. The first system (measures 1-6) starts with a dynamic of *f*, followed by *mp*, and ends with a crescendo from *f* to *p*. The second system (measures 7-14) begins with a dynamic of *f*, includes a 4-measure rest, and ends with a crescendo from *f* to *f*. The third system (measures 15-20) starts with a dynamic of *pp*, features several triplet markings, and ends with a crescendo to *f*. The fourth system (measures 21-24) begins with a dynamic of *mf*, includes a crescendo to *mp*, and features several triplet markings. The fifth system (measures 25-28) starts with a dynamic of *pp*, includes a crescendo, and features several triplet markings. The sixth system (measures 29-33) begins with a dynamic of *mf*, includes a dynamic of *p*, a crescendo to *mf*, and a dynamic of *ppp*. The seventh system (measures 34-39) consists of a series of eighth notes. The eighth system (measures 40-44) starts with a dynamic of *mf*, includes a dynamic of *mp*, and ends with a dynamic of *mf*.

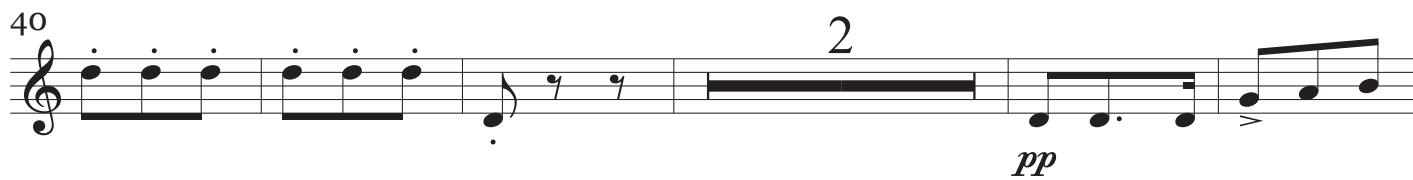
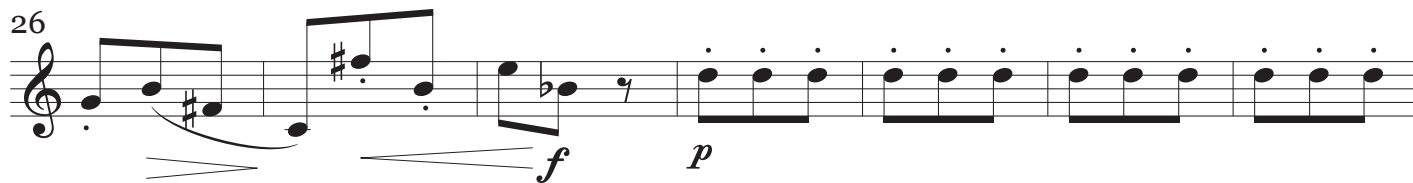
# May

## Tacet



# Scaffolding

♩ = 112c. *firmly*



# Limbo

♩ = 50c.

pp

mf ppp

10 mp

Violins p sfz sf 3

mp ff pp ff ppp 9

mp

## OBOE

52

5

*p* *f* *p* *f* *p* *f* *p*

61

*f* *p* *f* *p* *f* *p* *p* *f*

69

*p* *f* *p* *f*

75

*pp* *ffp* *sfz*

# The Bitter Withy

♩. = 1126.

Musical staff with rests and measure numbers 8, 7, 4.

22

Violin 1

3

pizz.

29 *A little slower*

6

*pp*

39

43

47

*mf*

51

*ff*

58

6

*p*

Violin 2

68

*pp*

72

*ff*

76

*p*

80

*p*

85

*mf*

89

*fp* *fp*

94

*A little slower again*

*fp* *fp* *sf* *sf in p (sempre sim.)*

99

105

*f* 5

# To the Infant Martyrs

$\text{♩} = 50c.$

*solo*

*p* *pp* *mf*

*pp* *p*

*p*

*mp* *p*

*mfp* *mfp* *p*

*broaden* ————— *expansive*

*mf*

*pp*